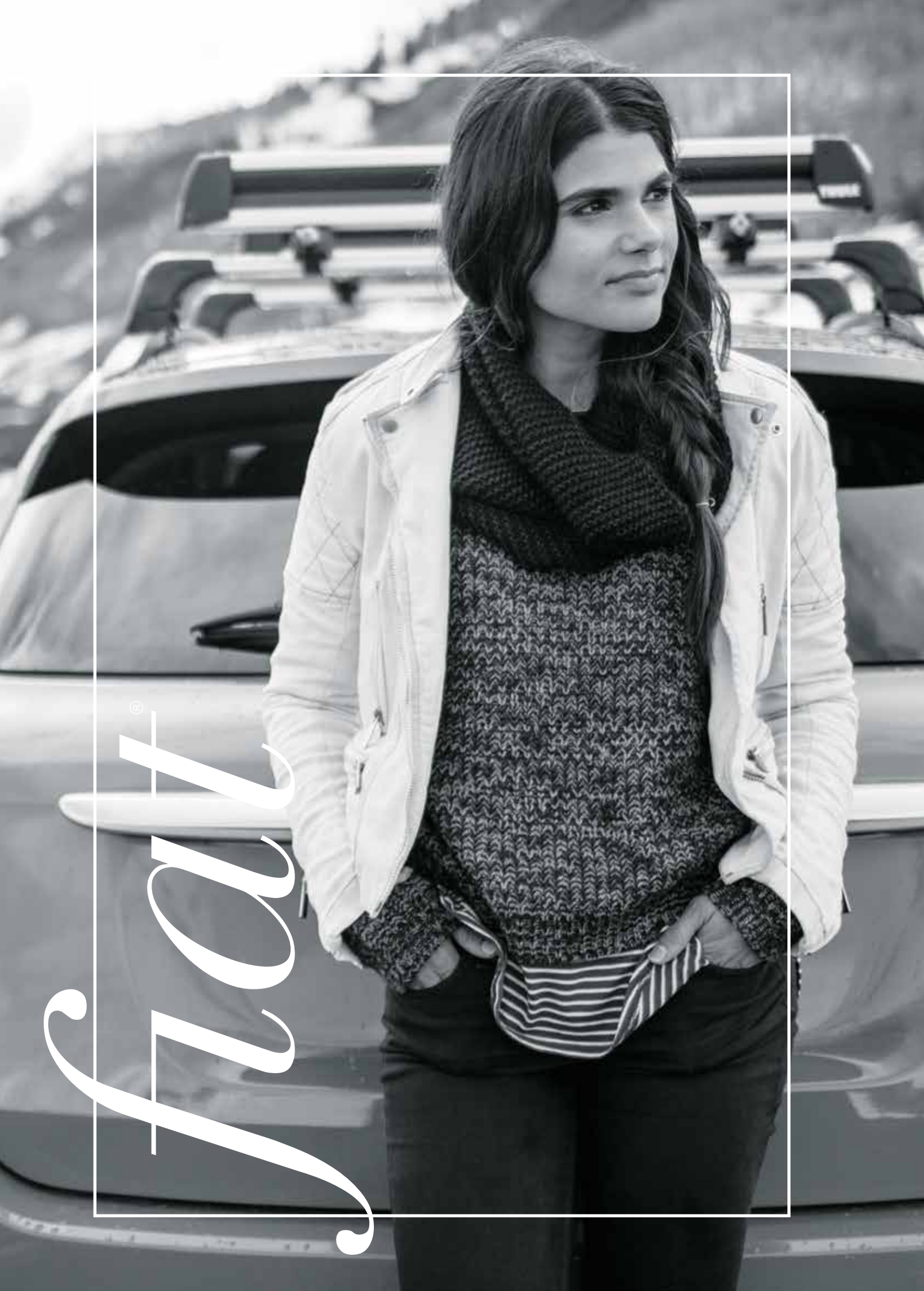


# FIAT® 500X





FIAT®

Driving a FIAT® 500X, with its available All-Wheel Drive and muscular build, is like hanging with that super-confident, athletic friend who pushes you to seek out more adventure in your day. Its Italian charm will win over friends and family alike, and it has the extra room to invite them along. With lots of ways to personalize, it lets you be you. In all, the 500X is more than a great companion—it's a great influence.

**UNMISTAKABLY ITALIAN.** It should be no surprise that the FIAT 500X was designed at Centro Stile in Turin, Italy. With design cues that capture the charm and charisma of that very first Nuova Cinquecento, the 2017 FIAT 500X boldly infuses the crossover segment — and its drivers — with the FIAT spirit of innovation and functionality.



# 500X Highlights

FIAT® 500X checks all the boxes with 4 doors, available All-Wheel Drive, performance, roominess, “techy-ness,” safety and security features — and some unexpected extras.

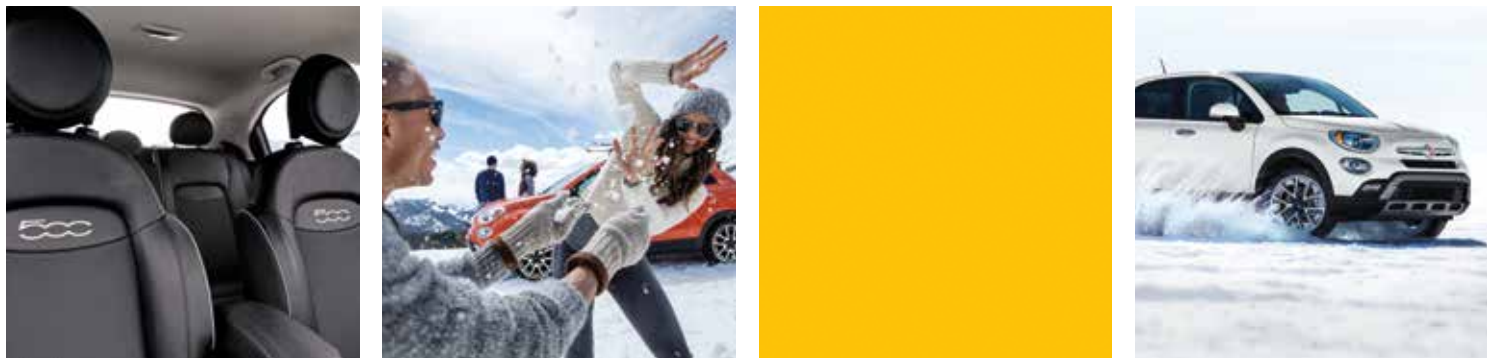


## FIAT 500X POP

- 1.4L 16V MultiAir® Turbo I-4 — 160 hp/184 lb-ft of torque with 6-speed manual
- 2.4L 16V Tigershark® with MultiAir2 I-4 — 180 hp/175 lb-ft of torque and 9-speed automatic with AutoStick — Available
- All-Wheel-Drive (AWD) System — Available
- FIAT Dynamic Selector with 3 modes: Auto, Sport and Traction+ (with optional AWD)
- Lower body cladding
- Chrome exterior accents
- Projector headlamps
- Power, heated exterior mirrors with turn signals
- 3.5-inch Black and White cluster display
- Cloth bucket seats
- Front-passenger forward fold-flat seat
- 60/40 split-folding rear seats
- Steering-wheel audio and cruise controls
- Radio 3.0 with integrated 4-line display
- Remote keyless entry
- Security alarm
- Dual-pane power sunroof — Available
- BeatsAudio™ Premium Sound System — Available

## FIAT 500X LOUNGE

- 2.4L 16V Tigershark with MultiAir2 I-4 and 9-speed automatic with AutoStick
- AWD System — Available
- FIAT Dynamic Selector with 3 modes: Auto, Sport and Traction+
- Lower body cladding
- Chrome exterior accents including bottom window trim
- Dual-Zone Automatic Temperature Control (ATC)
- Ambient interior lighting
- Power 8-way driver seat with 4-way lumbar adjuster
- Heated front seats
- Heated, premium-wrapped steering wheel with audio and cruise controls
- Windshield wiper de-icer
- Premium Audio System
- Uconnect 6.5-inch touchscreen radio with GPS Navigation and Bluetooth
- SiriusXM Traffic<sup>2</sup> and SiriusXM Travel Link<sup>2</sup>
- ParkView® Rear Back-Up Camera<sup>3</sup>
- Dual-pane power sunroof — Available
- BeatsAudio Premium Sound System — Available



## FIAT 500X TREKKING

- 2.4L 16V Tigershark with MultiAir2 I-4 and 9-speed automatic with AutoStick
- AWD System — Available
- FIAT Dynamic Selector with 3 modes: Auto, Sport and Traction+
- Rugged lower body cladding plus front and rear fascia
- Satin Silver exterior accents
- Cornering front fog lamps
- Automatic projector headlamps
- Deep-tint sunscreen glass
- Adjustable cargo floor
- 3.5-inch color cluster display
- Premium-wrapped steering wheel with audio and cruise controls
- Leather-wrapped shift knob
- Uconnect® 5.0-inch touchscreen radio with Integrated Voice Command<sup>1</sup>\* and Bluetooth®
- SiriusXM® Satellite Radio<sup>2</sup>
- Keyless Enter 'n Go™ with push-button start
- Remote Start System
- Dual-pane power sunroof — Available
- BeatsAudio Premium Sound System — Available



500X POP



500X TREKKING



500X LOUNGE





## FIAT® 500X Pop

### EVERYBODY'S IN: THE FIAT® 500X POP MOVEMENT

This 500X is all about accessibility. New for 2017, the 500X Pop lets you opt for All-Wheel Drive and its accompanying FIAT® Dynamic Selector. The 1.4L MultiAir® Turbo engine with 6-speed manual transmission comes standard, along with these desired features: air conditioning, cruise control, Uconnect® Radio 3.0 and Media Hub with USB and auxiliary ports, steering wheel-mounted controls, deluxe cloth seating, 60/40 split-folding rear seats, power heated body-color mirrors with turn signal indicator and more. With its “go anywhere, anytime” spirit, the 500X Pop will not only reflect popular culture, it will help inspire it.



### CINQUECENTO CROSSES OVER

The brawny good looks of the 500X Trekking will give you the nudge you need to make good on those dreams of adventure. Standard fare includes rugged-looking vinyl/cloth seating, unique front and rear “rugged appearance” fascias, automatic headlamps, front cornering fog lamps and unique 17-inch wheels. And with standard Keyless Enter 'n Go™ and Remote Start systems, there are no excuses — just get out there!



### CONFIDENCE: ALL-WHEEL DRIVE STYLE

The FIAT® 500X is the first in the 500 family to offer the confidence of available All-Wheel Drive (AWD), with a unique system that brings innovative functionality to conventional AWD. Its disconnecting rear axle helps to improve fuel efficiency by automatically selecting Front-Wheel Drive (FWD) or AWD when road conditions make it necessary. On the 500X Trekking model, it's paired with the added power and capabilities of the 2.4-liter Tigershark® MultiAir®2 I-4 engine and 9-speed automatic transmission. Of course, even the most adventuresome spirits would rather not “rough it.” 500X Trekking gladly accommodates with available features like leather-trimmed seats, eight-way power driver seat with four-way power lumbar adjuster, heated steering wheel and front seats, Dual-Zone automatic temperature-controlled climate system, BeatsAudio™ Premium Sound System, dual-pane power sunroof and 18-inch aluminum wheels.



## FIAT® 500X Trekking

## BIG SKY TO GO

Designers thought outside its eye-catching, iconic lines to make the most of the views that surround the FIAT® 500X. By adding an available dual-pane power sunroof with a sliding panoramic panel, they created a wide, spacious feeling wherever you go. The roof's glass panels match seamlessly with the body sheet metal, and light is easily managed with a manual sunshade. This is how to turn heads both inside and outside of 500X.

## YOU'VE ARRIVED EVERY TIME YOU SET OUT

As the name suggests, the 500X Lounge will be your go-to place to unwind — its available premium leather-trimmed seats, standard heated front seats, an eight-way power driver seat with four-way power lumbar adjuster, leather-wrapped shift knob and a premium-wrapped heated steering wheel all encourage you to stay awhile. The available Premium Package includes a dual-pane power sunroof, BeatsAudio™ Premium Sound System with 9 speakers including subwoofer, and striking 18-inch wheels for improved views and sounds. The 500X Lounge also shares its street smarts: its user-friendly navigation via the Uconnect® 6.5-inch touchscreen, ParkView® Rear Back-Up Camera<sup>3</sup> with active grid lines, available ParkSense® Rear Park Assist System<sup>3</sup>, available Blind Spot Monitoring (BSM)<sup>4</sup> and Rear Cross-Path Detection<sup>3</sup> all make you more aware of your surroundings.

# FIAT® 500X Lounge



# Exhilaration 101

FIAT® 500X engineers delivered the kind of awe-inspiring crossover performance that's designed to convince even more drivers to cross over to FIAT.

FIAT® 500X offers two extraordinary engine options, starting with the 1.4-liter MultiAir® Turbo four-cylinder that comes standard on Pop FWD models. Paired with a 6-speed manual transmission, this powerplant generates 160 horsepower and 184 lb-ft of torque — giving Pop a snappy performance true to its name.



Standard on most 500X models (and available on Pop FWD), the 2.4-liter Tigershark® I-4 engine with MultiAir2 steps things up even more. It utilizes electrohydraulic Variable Valve Timing (VVT) and Variable Valve Lift (VVL) technology, producing 180 horsepower and 175 lb-ft of torque. Its extremely sophisticated technology has been widely praised in tandem with its 9-speed transmission. This dynamic duo optimizes engine output so you can look forward to fast, assertive launches and smooth, power-when-you-need-it delivery on the highway.



FIAT 500X features the available Dynamic Selector to help you make the most of the road ahead. It uses the Electronic Stability Control (ESC)<sup>5</sup> system, braking system management and engine response optimization to enhance driving. Choose from three customized traction modes for optimal performance: the basic **AUTO MODE** is designed for the everyday, routine trips — it will help optimize fuel efficiency and riding comfort. In **SPORT MODE**, ESC<sup>5</sup> and steering calibrations are tuned for a sportier feel and faster driving response. Additionally, Sport mode optimizes the transmission for lateral dynamics in All-Wheel Drive. The **TRACTION+ MODE** maximizes low-speed traction — the kind you need when things get a little slick or bumpy. It all works by providing additional wheel-slip through specially tuned chassis controls and a more-direct engine response.



### X ON WHEELS

The FIAT® Dynamic Selector helps make the most of the road ahead with three customized traction modes for optimal performance.



**INSTANTLY ADAPTS** The disconnecting rear axle helps make the FIAT 500X stand out as one very adaptable, fuel-efficient, AWD-capable crossover. With its ability to automatically switch from FWD to AWD and back, it provides a no-brainer boost to automatic traction.



FIAT 500X Powertrain



ALL AVAILABLE



HEATED STEERING WHEEL



HEATED FRONT SEATS



REMOTE START



KEYLESS ENTER 'N GO™



PUSH-BUTTON START

#### THOUGHTFUL ACCOMMODATIONS

FIAT® 500X designers are extremely deliberate — every detail is carefully considered. Personal style is encouraged with an array of distinctive color and material choices, including available premium perforated leather trim seating on Trekking and Lounge models. Engineers delivered superior torsional rigidity and noise, vibration and harshness (NVH) applications that contribute to the exceptionally quiet FIAT 500X cabin. It's a place where form, function, drivers and passengers all live happily together.





Uconnect  

#### GREAT CONNECTIONS

*With the available Uconnect® system, your FIAT® 500X becomes more than just a mode of transportation — it's your portal to the world.*



## Expert Briefing

Stunning visuals and advanced audio and voice technologies deliver up-to-the-minute intel, keeping drivers and passengers fully informed.

The FIAT® 500X interior is designed to feel like a refuge — but with Uconnect®, it allows you to invite the whole world in. Large 5.0- or 6.5-inch touchscreens and hands-free<sup>1</sup> technologies deliver essential information and entertainment while keeping you focused on driving. Depending on the system, you can enjoy a wide range of services: Integrated Voice Command<sup>1</sup> with Bluetooth® gives you hands-free phone<sup>1</sup>, voice command<sup>1</sup> and streaming audio; SiriusXM® Satellite Radio<sup>2</sup> offers commercial-free music, sports, news and more; SiriusXM Travel Link<sup>2</sup> alerts you to local weather, fuel prices, movies and sports; SiriusXM Traffic<sup>2</sup> gets you there faster with the latest construction, accident and highway reports; GPS Navigation with 3-D city and terrain maps; and Siri® Eyes Free<sup>6</sup> fully integrates your iOS mobile device with the audio system. See specifications for available systems and services.

The Uconnect 3.0 4-Line Full-LCD Radio is the entry level Uconnect radio that provides full support for digital music via USB and auxiliary connections, media players, iPods®, iPhones® and smartphones while charging the device. It also shows music information and browsing functions.

Instantly access a range of useful information from the standard 3.5-inch Black and White cluster display or the available full-color Electronic Vehicle Information Center (EVIC) comprised of a Thin Film Transistor (TFT) Liquid Crystal Display (LCD) on your instrument cluster. From safety alerts to fuel usage to FIAT Dynamic Selector data, the 500X reconfigurable display lets you customize what you see, and clear graphics make them easy to read.



FIAT 500X Technology



# Lots of *play* room



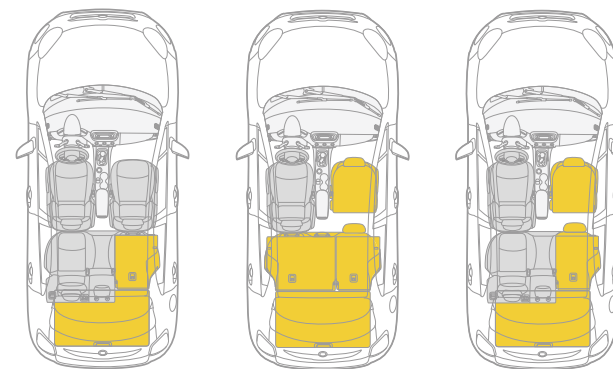
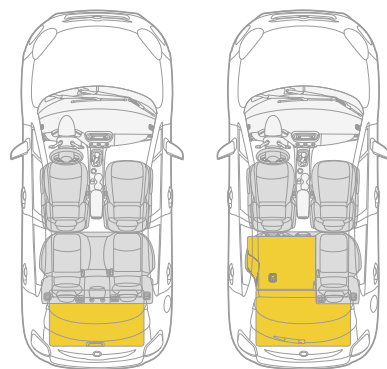
## A MUSICAL SCORE

Every trip has its own soundtrack when you turn to the superior sounds generated by the available BeatsAudio™ Premium Sound System by Dr. Dre. Get studio-quality sound, just the way the artist intended. The system has an 8-channel performance with 506 watts of power and nine speakers, including a 6.5-inch subwoofer specifically tuned for the FIAT® 500X.



## PLENTY OF ROOM FOR FIVE

With FIAT® 500X, the X could very well stand for “extra room.” This FIAT delivers enough space to welcome five — with cubic feet to spare. The utility of its interior makes the seemingly impossible possible — or at least a heck of a lot more comfortable than you imagined. A large rear cargo area, height-adjustable rear cargo floor, 60/40 second-row split seats and a fold-forward front-passenger seat accommodate the longer, wider and taller things you once said “forget it” to. Plus, you can keep all your other stuff stashed and organized, thanks to genius storage solutions like a dual glove box with a locking lower portion. A center-console storage area serves as home base for device connectivity with its integrated USB and auxiliary ports plus 12-volt power outlet. All four doors cleverly include bottle holders and map pockets.



The richly appointed interior of FIAT® 500X  
extended trips and adventures. Let's just say

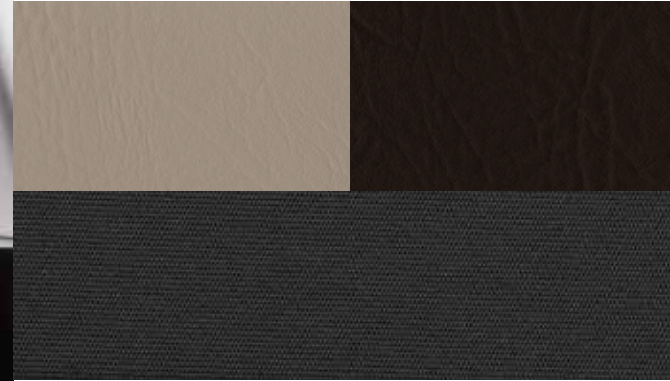
inspires and anticipates  
it's very accommodating.

500X Interior Colors

Black Fabric with Black and Anthracite Tex Cloth with White Piping  
Standard on Pop



Black Fabric with Grey/Black Trekking Cloth  
Standard on Trekking



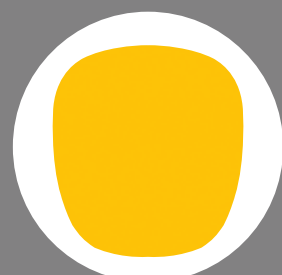
Light Dove Grey or Dark Brown Fabric with Dark Grey Cloth  
Standard on Lounge



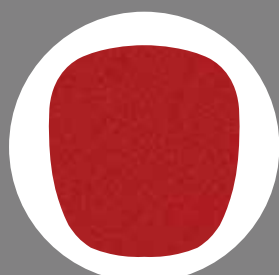
Black Perforated Leather Trim  
Available on Trekking and Lounge



Tobacco Perforated Leather Trim  
Available on Trekking and Lounge



**GIALLO TRISTRATO**  
Yellow Tri-coat



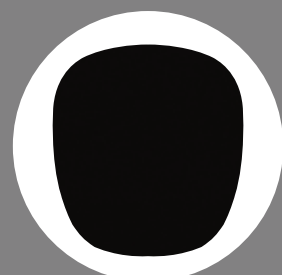
**ROSSO AMORE**  
Red Tri-coat



**ARANCIO**  
Orange



**BLU VENEZIA**  
Blue Metallic



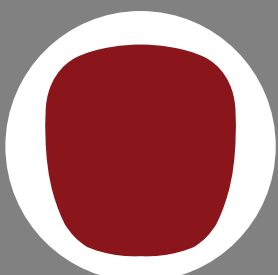
**NERO CINEMA**  
Black



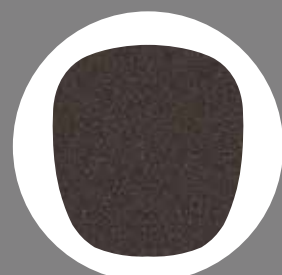
**GRIGIO ARGENTO**  
Grey Metallic



**BIANCO GELATO**  
White



**ROSSO PASSIONE**  
Red Hypnotique



**BRONZO MAGNETICO**  
Bronze Metallic



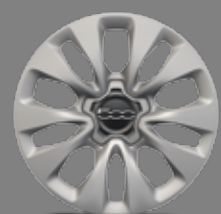
**NEW RAME CHIARO\***  
Light Copper



**NEW CIELO BLU\***  
Sky Blue



**NEW GRIGIO GRAPHITE\***  
Graphite Grey



**16-INCH STEEL WITH GRAY PAINTED WHEEL COVER**  
Standard on Pop FWD



**16-INCH ALUMINUM WITH BRIGHT SILVER FINISHING**  
Available on Pop



**17-INCH 5-WEDGE-SHAPED-SPOKE MACHINED ALUMINUM WITH MATTE BLACK POCKETS**  
Standard on Pop AWD  
Available on Pop FWD



**17-INCH 5-SPOKE MACHINED ALUMINUM WITH PAINTED POCKETS**  
Standard on Trekking



**18-INCH MACHINED ALUMINUM WITH POLISHED AND MATTE PAINTED SPOKES**  
Available on Trekking



**17-INCH SIX-SPLIT-SPOKE ALUMINUM**  
Standard on Lounge



**17-INCH ALUMINUM WITH BRIGHT SILVER FINISHING\***  
Standard on Lounge



**18-INCH 20-SPOKE MACHINED ALUMINUM WITH PAINTED POCKETS**  
Available on Lounge

*All-Wheel Drive makes it heavenly*



FIAT® 500X Trekking shown in Giallo Tristrato.

FIAT® 500X is an IIHS Top Safety Pick!† It starts with its framework, while advanced features and sensors further serve to protect.

**GREAT VISIBILITY**

A windshield wiper de-icer, rain-sensitive windshield wipers, Auto High-Beam Headlamp Control, rearview auto-dimming mirror and cornering front fog lamps all make things extraordinarily clear. Available.

**IN COMMAND**

Count on a 4-wheel antilock disc brake system, Electronic Stability Control (ESC),<sup>5</sup> Electronic Roll Mitigation and Hill Start Assist to keep your driving on course. Standard.



**ON GUARD**

A high-strength steel unibody, comprehensive 7-air bag<sup>7</sup> system, front-passenger seat BeltAlert (LAX), Child Seat Anchor System (LATCH) and three rear-seat head restraints<sup>8</sup> all work to shield occupants during impacts. Standard.

**BE FOREWARNED**

Full-Speed Forward Collision Warning with Active Braking (FSFCW+),<sup>9</sup> Keyless Enter 'n Go,<sup>TM</sup> LaneSense® Lane Departure Warning with Lane Keep Assist (LDW+),<sup>10</sup> ParkView® Rear Back-Up Camera,<sup>3</sup> ParkSense® Rear Park Assist System,<sup>3</sup> Blind Spot Monitoring (BSM)<sup>4</sup> and Rear Cross-Path Detection,<sup>3</sup> and Tire Pressure Monitoring System alert you ahead of time. Available.

**FIAT® 500X Specifications**

	POP	TREKKING	LOUNGE
<b>ENGINES</b>		<b>TRANSMISSIONS</b>	
1.4L MultiAir® Turbo I-4			
2.4L Tigershark® I-4 with MultiAir2			
<b>MECHANICAL FEATURES</b>			
Drive System — Front-Wheel Drive (FWD)	•	•	•
All-Wheel Drive (AWD) with rear-axle disconnect	○	○	○
Dynamic Selector — With 3 modes: Auto, Sport and Traction+ (standard on Pop AWD)	○	•	•
Electronic Stability Control <sup>5</sup>	•	•	•
Steering — Electric power steering (EPS), rack and pinion, with variable-speed sensitivity	•	•	•
Manual tilt and telescoping column	•	•	•
Suspension — MacPherson front with coil springs and twin-tube struts with stabilizer bar; Chapman rear with coil springs and twin-tube shock absorbers with KONI® FSD technology	•	•	•
<b>EXTERIOR FEATURES</b>			
Bodyside — Lower sill and wheel arch accent moldings in Black	•	•	•
Door Handles — Chrome finish	•		•
Satin Silver finish		•	
Daylight Opening (DLO) accent moldings — Black	•	•	
Chrome bottom molding			•
Exhaust Tip — Bright Chrome	•	•	•
Fascia — Body-color front and rear	•		•
Satin Silver accent-/body-color front and rear		•	
Fuel Tank — 12.7-gallon (48-liter) capacity	•	•	•
Fuel Door — Capless fuel filler	•	•	•
Glass — Deep-tint, sunscreen, 2nd row and cargo area		•	•
Lighting — Bifunctional halogen projector headlamps	•	•	•
Automatic headlamps		•	•
Auto High-Beam Headlamp Control (packaged with Advanced Safety Package)		P	P
Cornering front fog lamps (requires automatic headlamps)		•	•
Daytime running headlamps (DRLs)	•	•	•
Incandescent taillamps	•	•	•
Supplemental turn signal on mirror	•	•	•
License Plate Bracket — Front	•	•	•
Mirrors — Power adjustable, power heated with supplemental turn signal in body color	•	•	•
Roof Rails — Black (packaged with Mopar® Adventure Package)	P	P	P
Adjustable crossbars (packaged with Mopar Adventure Package; not available with dual-pane power sunroof)	P	P	P
Bright (packaged with Trekking Popular Equipment Package; not available with dual-pane power sunroof)		P	
Sunroof — Power, dual-pane panoramic (packaged with Trekking and Lounge Premium Packages)	○	P	P
Tires — 215/60R16 All-Season (FWD models only)	•		
215/55R17 BSW All-Season (FWD models only; packaged with 17-inch 5-wedge-shaped-spoke wheels)	P	•	•
215/60R17 BSW All-Season (AWD models only)	•	•	•
225/45R18 BSW All-Season (packaged with 18-inch wheels on FWD models)		P	P
215/55R18 All-Season (packaged with 18-inch wheels on AWD models)		P	P
Tire Service Kit	•	•	•
Wheels — 16-inch steel with Silver Gray painted wheel cover (FWD models only)	•		
16-inch aluminum with Bright Silver finishing (requires Pop Popular Equipment Package; FWD models only)	○		
17-inch 5-wedge-shaped-spoke machined aluminum with Matte Black pockets (standard on Pop AWD)	○		
17-inch 5-spoke machined aluminum with painted pockets		•	
17-inch aluminum with Bright Silver finishing (late availability)			•
18-inch machined aluminum with Polished and Matte painted spokes (packaged on Trekking Premium Package)		O/P	
18-inch 20-spoke machined aluminum with painted pockets (packaged on Lounge Premium Package)			O/P
Windows — Power front and rear with front 1-touch up/down and rear express down	•	•	•
Wiper System — Front, variable/intermittent	•	•	•
Rear, defroster and wipers/washer	•	•	•
Rain-sensitive windshield (packaged with Advanced Safety Package)		P	P

†Applies to models built after July 2015.

## FIAT® 500X Specifications (continued)

	POP	TREKKING	LOUNGE
Windshield de-icer (packaged with Cold Weather Package)		P	•
<b>INTERIOR FEATURES</b>			
Air Conditioning	•	•	
Automatic Temperature Control (ATC) — With Dual-Zone controls (packaged with Trekking Popular Equipment Package)		P	•
Armrest — Front-center, sliding, vinyl-wrapped, coordinated with seat color (packaged with 2.4L/9-speed on Pop; standard on Pop AWD)	P	•	•
Assist Handles — Driver and passenger	•	•	•
Cargo Area — Lamp, rear	•	•	•
Compartment cover		•	•
Height-adjustable floor		•	•
Tie down D-ring loops, 4	•	•	•
Console — Center, floor with 2 front cup holders	•	•	•
Front, overhead with map lights	•	•	•
Door Locks — Power, speed-sensitive	•	•	•
Electronic Vehicle Information Center (EVIC) — 3.5-inch Thin Film Transistor (TFT) Black and White display	•		
3.5-inch TFT full-color display		•	•
Floor Mats — Front and rear (packaged with Pop Popular Equipment Package)	P	•	•
Glove Box — Front-passenger with lamp	•	•	•
Heater Booster (included with 1.4L engine)	•		
Instrument Panel — Exterior body-color	•		•
Accent interior color		•	
Lighting — Cargo compartment	•	•	•
Reading/map lamps on overhead console	•	•	•
Illuminated entry	•	•	•
Ambient interior (packaged with Trekking Popular Equipment Package)		P	•
Media Hub — Located at center console; front includes Remote USB port and auxiliary input jack	•	•	•
Mirrors — Rearview, manual day/night adjust	•	•	
Rearview, auto-dimming			•
Sun visors with vanity mirrors	•		
Sun visors with illuminated vanity mirrors		•	•
Outside Temperature Display located in EVIC	•	•	•
Power Outlet — 12-volt auxiliary	•	•	•
Seating — Black fabric with Black/Anthracite Tex Cloth with White piping	•		
Black fabric with Grey/Black Trekking cloth		•	
Light Dove Grey or Dark Brown fabric with Dark Grey cloth			•
Premium perforated leather trim in Black or Tobacco		O	O
Seats, Front — Fold-forward passenger	•	•	•
Heated driver and passenger (packaged with Cold Weather Package)		P	•
Driver and front-passenger height adjuster	•	•	•
Manual 6-way driver and passenger	•	•	
Power 8-way driver seat with 4-way power lumbar adjuster and manual passenger adjuster (packaged with Trekking Popular Equipment Package)		P	•
Seatback map pockets	•	•	•
Seating, Rear — 60/40 split-folding seat	•	•	•
3 head restraints <sup>8</sup>	•	•	•
Shift Knob — Black	•		
Black, leather-wrapped with Chrome accent (packaged with Pop Popular Equipment Package)	P	•	•
Steering Wheel — Urethane	•		
Premium-wrapped with audio and cruise controls (packaged with Pop Popular Equipment Package)	P	•	•
Heated (packaged with Cold Weather Package)		P	•
Mounted audio controls	•	•	•
<b>UCONNECT®/MULTIMEDIA</b>			
Remote USB Port — Located in center console storage bin (packaged with Pop Popular Equipment Package)	P	•	•
Speakers — 4	•		
6 (packaged with Pop Popular Equipment Package)	P	•	
8-speaker Premium Audio System			•
BeatsAudio™ Premium Sound System — 9-speakers including subwoofer (packaged with Trekking and Lounge Premium Packages; requires Pop Popular Equipment Package on Pop models)	O	P	P
SiriusXM® Satellite Radio <sup>2</sup> — Includes 1-year trial subscription (packaged with Uconnect 5.0)	P	•	•
SiriusXM Traffic <sup>2</sup> — Includes 5-year trial subscription (packaged with Uconnect 6.5 NAV)		O	•

## FIAT® 500X Specifications (continued)

	POP	TREKKING	LOUNGE
<b>UCONNECT®/MULTIMEDIA (continued)</b>			
SiriusXM® Travel Link <sup>2</sup> — Includes 5-year trial subscription (packaged with Uconnect 6.5 NAV; requires SiriusXM Satellite Radio <sup>2</sup> )		O	•
Radio 3.0 — Includes AM/FM radio, integrated 4-line display and speed-adjusted volume	•		
Uconnect 5.0 — 5.0-inch touchscreen display, Integrated Voice Command <sup>1</sup> with Bluetooth® for hands-free phone <sup>1</sup> , voice command <sup>1</sup> and streaming audio, AM/FM radio and SiriusXM Satellite Radio <sup>2</sup> with 1-year trial subscription (packaged with Pop Popular Equipment Package)	P	•	
Uconnect 6.5 NAV — 6.5-inch touchscreen, GPS Navigation with 3-D city and terrain maps, Integrated Voice Command <sup>1</sup> with Bluetooth for hands-free phone <sup>1</sup> , voice command <sup>1</sup> and streaming audio, SiriusXM Traffic <sup>2</sup> and SiriusXM Travel Link <sup>2</sup> (including 5-year trial subscription), HD radio, AM/FM radio, Siri® Eyes Free <sup>6</sup> for iPhone® integration and compass gauge		O	•
<b>SAFETY AND SECURITY</b>			
Air Bags <sup>7</sup> — Advanced multistage front	•	•	•
Driver's-side knee bolster	•	•	•
Supplemental front seat-mounted	•	•	•
Supplemental side-curtain front and rear	•	•	•
BeltAlert — Front-passenger seat	•	•	•
Blind Spot Monitoring (BSM) <sup>4</sup> and Rear Cross-Path Detection <sup>3</sup> (packaged with Advanced Safety Package)		P	P
Brake System — 4-wheel antilock disc	•	•	•
Electric Park Brake	•	•	•
Child Seat Anchor System (LATCH-ready)	•	•	•
Electronic Stability Control (ESC) <sup>5</sup>	•	•	•
Electronic Roll Mitigation	•	•	•
Hill Start Assist	•	•	•
Full-Speed Forward Collision Warning with Active Braking (FSFCW+) <sup>9</sup> (packaged with Advanced Safety Package)		P	P
LaneSense® Lane Departure Warning with Lane Keep Assist (LDW+) <sup>10</sup> (packaged with Advanced Safety Package)		P	P
ParkSense® Rear Park Assist System <sup>3</sup> (packaged with Pop Popular Equipment Package and Advanced Safety Package on Trekking and Lounge models)	P	P	P
ParkView® Rear Back-Up Camera <sup>3</sup> (packaged with Pop Popular Equipment Package and Trekking Popular Equipment Package)	P	P	•
Remote Entry — Keyless/Illuminated Entry System (included with 1.4L/6-speed manual)	•		
Keyless Enter 'n Go™ (requires 2.4L engine; standard on Pop AWD)	O	•	•
Remote Start System (requires 2.4L engine; standard on Pop AWD)	O	•	•
Sentry Key® Engine Immobilizer	•	•	•
Tire Pressure Monitoring System	•	•	•
Vehicle Theft Security Alarm	•	•	•
<b>GROUPS AND PACKAGES</b>			
Advanced Safety Package — FSFCW+ <sup>9</sup> , LDW+ <sup>10</sup> , BSM <sup>4</sup> and Rear Cross-Path Detection <sup>3</sup> , ParkSense Rear Park Assist System <sup>3</sup> , rain-sensitive windshield wipers and Auto High-Beam Headlamp Control (requires Trekking Popular Equipment Group)		O	O
Cold Weather Package — Includes heated front seats, heated steering wheel and windshield wiper de-icer		O	
Pop Popular Equipment Package — Includes ParkView Rear Back-Up Camera <sup>3</sup> , ParkSense Rear Park Assist System <sup>3</sup> , Uconnect 5.0 radio, remote USB port, 6 speakers, front and rear carpeted floor mats, premium-wrapped steering wheel and leather-wrapped shift knob when equipped with the 2.4L engine (requires 6-speakers or BeatsAudio™ Premium Sound System; requires 16-inch aluminum wheel with Bright Silver finishing or 17-inch 5-wedge-shaped spoke aluminum wheels)	O		
Trekking Popular Equipment Package — Includes ParkView Rear Back-Up Camera <sup>3</sup> , Bright side roof rails, power 8-way driver seat with power 4-way lumbar adjuster and manual passenger adjuster, Dual-Zone Automatic Temperature Control (ATC) and ambient interior lighting (can replace roof rails with Trekking Premium Packages)		O	
Trekking Premium Package (FWD) — Includes dual-pane power sunroof, BeatsAudio Premium Sound System with 9 speakers including subwoofer and 18-inch machined aluminum wheels with polished and Matte painted spokes (package for front-wheel-drive models)		O	
Trekking Premium Package (AWD) — Includes dual-pane power sunroof, BeatsAudio Premium Sound System with 9 speakers including subwoofer and 18-inch machined aluminum wheels with polished and Matte painted spokes (package for all-wheel-drive models)		O	
Lounge Premium Package (FWD) — Includes dual-pane power sunroof, BeatsAudio Premium Sound System with 9 speakers including subwoofer and 18-inch 20-spoke machined aluminum with painted pockets (package for front-wheel-drive models)			O
Lounge Premium Package (AWD) — Includes dual-pane power sunroof, BeatsAudio Premium Sound System with 9 speakers including subwoofer and 18-inch 20-spoke machined aluminum with painted pockets (package for all-wheel-drive models)			O

• = Standard. O = Optional. P = Available within Package noted.



wild child



FIAT® 500X is designed to not only get you where you want to go but how you want get there — and adding Mopar® accessories means you can let your imagination run even further. Choose from bodyside, hood and roof graphics, equipment carriers, protective covers, guards, storage systems and more. See a complete listing of available accessories at [mopar.com](http://mopar.com)

500X shown with Black Roof Side Rails,\* Removable Crossbars† Roof-Mount Ski and Snowboard Carrier,\*† White Mirror Covers, White Bodyside Moldings and 18-Inch Bright White Diamond-Cut Wheels.

\* Properly secure all cargo.

† Mounts to the removable Cross Bars and Roof Side Rails, each sold separately.

#### MOPAR® GROUPS AND PACKAGES

Mopar ATX Interior Athletic Appearance Group — Includes Mopar Premium Trekking Floor Mats, Mopar Bright Door Sills with Logo and Mopar Bright Pedal Kit (ATX) (requires 9-speed automatic transmission; not available with Mopar ATX Interior Urban Appearance Group and Mopar MTX Interior Appearance Group)	<input type="checkbox"/>	<input type="checkbox"/>	<input type="checkbox"/>
Mopar MTX Interior Appearance Group — Includes Mopar Bright Pedal Kit (MTX), Mopar Premium Floor Mats and Mopar Bright Door Sills with Logo (requires 6-speed manual transmission; not available with Mopar ATX Interior Urban Appearance Group)	<input type="checkbox"/>		
Mopar Checkered Graphics Package — Includes Mopar Checkered Lower Body Stripe and Mopar Hypnotic Red Mirror Caps; available in Nero Cinema, Giallo Tristrato, Bronzo Magnetico, Grigio Argento, Bianco Gelato and Blu Venezia	<input type="checkbox"/>	<input type="checkbox"/>	<input type="checkbox"/>
Mopar Italian Racing Appearance Package — Includes Mopar Italian Fender Emblem, Mopar Italian Racing Stripe Graphic and Mopar Hypnotic Red Mirror Caps; available in Nero Cinema, Giallo Tristrato, Bronzo Magnetico, Arancio, Grigio Argento, Bianco Gelato and Blu Venezia	<input type="checkbox"/>	<input type="checkbox"/>	<input type="checkbox"/>
Mopar ATX Interior Urban Appearance Group — Includes Mopar Premium Floor Mats, Mopar Bright Door Sills with Logo and Mopar Bright Pedal Kit (ATX) (requires 9-speed automatic transmission)	<input type="checkbox"/>	<input type="checkbox"/>	<input type="checkbox"/>
Mopar Special Edition Rebel Package — Includes Mopar "Rebel" Graphics Package and Mopar Hypnotic Red Mirror Caps; available in Nero Cinema and Grigio Argento	<input type="checkbox"/>	<input type="checkbox"/>	<input type="checkbox"/>
Mopar Adventure Package — Includes Mopar Side Roof Rails in Black with Mopar Adjustable Crossbars (not available with dual-pane power sunroof)	<input type="checkbox"/>	<input type="checkbox"/>	<input type="checkbox"/>
Mopar All-Weather Group — Includes Mopar Premium Floor Mats with Logo and Mopar Front Splash Guards without Logo and Rear Splash Guards with Logo (not available with the Mopar (ATX) Interior Athletic Appearance Group, Mopar (MTX) Interior Appearance Group and Mopar (ATX) Interior Urban Appearance Group)	<input type="checkbox"/>	<input type="checkbox"/>	<input type="checkbox"/>
Mopar Premium Exterior Appearance Package — Includes Mopar Chrome Hood Spear, Mopar Chrome License Plate Frame and Mopar Black Valve Stem Covers with Logo (not available with Mopar Italian Racing Appearance Package)	<input type="checkbox"/>	<input type="checkbox"/>	<input type="checkbox"/>

○ = Optional.

FIAT® 500L







<sup>®</sup>  
fiat

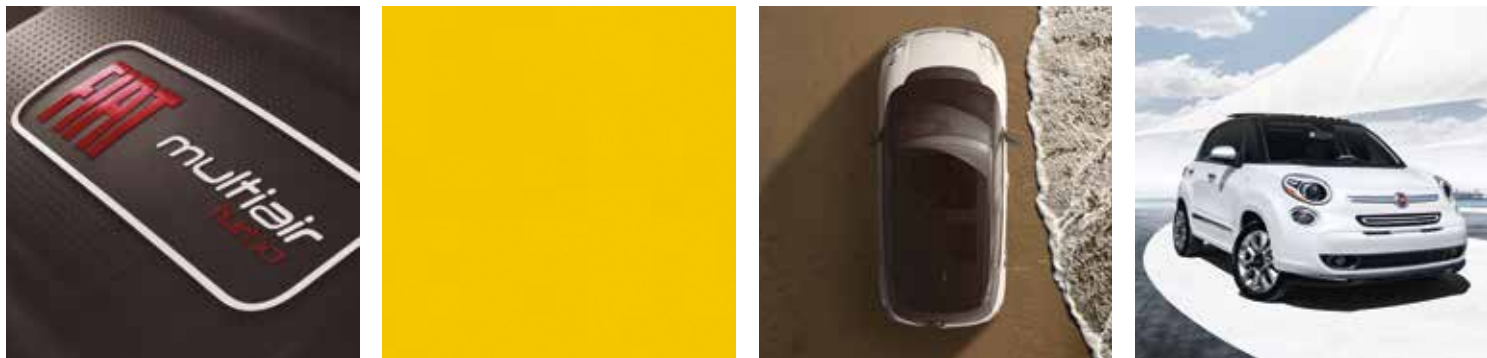
The multi-talented FIAT® 500L has a special knack for spatial design. Built to move five people at a time, the 500L keeps a streamlined, urban profile, yet its interior surprises with airy roominess and expansive views that set it apart from its peers. All told, its crowd-pleasing four doors, agile performance, essential tech and crazy-big cargo area will lead to the same question again and again: “Where are we going next?”

**GAME CHANGER.** The 500L offers 68.0 cu ft of maximum cargo volume (with the rear seats tumbled forward) and 98.8 cu ft of total interior volume for your latest adventure. It also offers super-flexible seating configurations with the Tilt, Tumble & Slide rear seats that accommodate both passengers and cargo.



# 500L Highlights

While FIAT® 500L reserves lots of cubic feet for your stuff, it also makes room for these essentials: your family and friends. Three trim levels mean it will fit you, too.



## FIAT 500L POP

- 1.4L MultiAir® Turbo I-4 — 160 hp/184 lb-ft of torque with 6-speed automatic with AutoStick
- Body-color door moldings, front and rear fascia and side mirrors
- Chrome exterior accents
- Projector headlamps
- Electronic Vehicle Information Center (EVIC)
- Silver-textured instrument panel bezel
- Premium cloth bucket seats
- 60/40 split-folding with Tilt, Tumble & Slide function
- Multi-position cargo panel
- Uconnect® 5.0-inch touchscreen radio with Integrated Voice Command<sup>1</sup>\* and Bluetooth®
- Leather-wrapped steering wheel with controls
- Tire Pressure Monitoring System

## FIAT 500L TREKKING

- 1.4L MultiAir Turbo I-4 — 160 hp/184 lb-ft of torque with 6-speed automatic with AutoStick
- Black door moldings with Satin Silver insert
- Rugged-design bottom cladding
- Satin Silver exterior accents
- Projector headlamps and fog lamps
- Premium-wrapped instrument panel bezel
- Premium leather-trimmed seats
- Heated front seats
- Uconnect 6.5-inch touchscreen with GPS Navigation capability
- BeatsAudio™ Premium Sound System
- SiriusXM® Satellite Radio<sup>2</sup>
- Urbana Appearance Package with Matte Black wheels, bodyside moldings and Black or Red accent roof — Available
- Dual-pane power sunroof — Available
- Accent roof in Nero or Bianco — Available

## FIAT 500L LOUNGE

- 1.4L MultiAir Turbo I-4 — 160 hp/184 lb-ft of torque with 6-speed automatic with AutoStick
- Body-side door moldings with Chrome insert
- Chrome exterior accents including side mirrors
- Dual-Zone Automatic Temperature Control (ATC)
- Projector headlamps and fog lamps
- Premium-wrapped instrument panel bezel
- Premium leather-trimmed seats
- Driver and front-passenger 4-way lumbar adjuster
- Heated front seats
- Uconnect 6.5-inch touchscreen with GPS Navigation capability
- BeatsAudio Premium Sound System
- 115-volt auxiliary power outlet
- ParkSense® Rear Park Assist System<sup>3</sup>
- ParkView® Rear Back-Up Camera<sup>3</sup>
- Rearview auto-dimming mirror
- Dual-pane power sunroof — Available
- Accent roof in Nero or Bianco — Available



500L POP



500L TREKKING



500L LOUNGE

\*A note about this brochure: all disclaimers and disclosures can be found on page 25. Opposite page: Properly secure all cargo.



# FIAT® 500L Pop

## POP IS FOR THE PEOPLE

Combining contemporary Italian design and iconic FIAT® cues into a roomier package made for five, the 500L Pop is the vehicle that takes 500 to the next logical step. True to its name, this Pop movement believes in accessibility: a glance at the 500L Pop sticker reveals that it's generously equipped without adding to the bottom line. So all of its drivers, not just some, will thrill to the 1.4L MultiAir® I-4 Turbo engine with 6-speed automatic transmission, including AutoStick. They'll find electric power steering, power side mirrors, and front and rear windows with 1-touch capability. A generous 5.0-inch touchscreen display is part of its Uconnect® 5.0 entertainment system and everyone will keep their cool with standard air conditioning.



#### SHARE THE ADVENTURE

Some places have that certain "something" that draws a crowd. With not just room for five, but roomy room for five, FIAT® 500L Trekking is brimming with friendly amenities that will turn it into your posse's favorite "go-to" vehicle. Luxe seating and an available 20.7-sq-ft dual-pane glass sunroof system give both first- and second-row passengers preferred seating and views. The 500L owes its fun-to-drive persona to a small-wide architecture, rigidity, precise electric power steering (EPS), and driving steering torque (DST) combined with efficient engine and transmission performances. All of these well-thought-out components lead to the desired "hey-let's-go-for-another-ride" response that you are going for.

## FIAT® 500L Trekking



# FIAT® 500L Lounge

## CIVILITY IS IN THE DETAILS

You'll find sophisticated touches everywhere on the 500L Lounge — from exterior Chrome accents to a soft-touch, leather-wrapped shift knob and steering wheel to conveniently placed window and audio controls. Every consideration has been made from the driver and passengers' points of view, including safety and security features that act as extra eyes and ears. They all work to enhance awareness — of what's immediately around the vehicle or what's going on in the world at large. Uconnect® and the BeatsAudio™ Premium Sound System partner up to bring their communication, technical and audio expertise to enhance the FIAT® 500L experience. All because the 500L designers know the little things really are a big deal after all.



FIAT® 500L Trekking shown in Blu Tornado with Urbana Appearance Package.

# Powered to Move

Living large FIAT® 500L-style means there is plenty of power and pep to draw on. Its 160 hp Turbo engine brings new meaning to “the more, the merrier”...

## THIS BIGGER IS BETTER

FIAT® 500L promises to bring life's greatest moments to you and the crowd you've got in tow — after all, it's got more than ample horses under the hood to power its generous proportions. The award-winning and innovative 1.4-liter MultiAir® Turbo engine delivers 160 horsepower and 184 lb-ft of torque. Structurally, it starts with a durable cast-iron block and structural aluminum bed plate. A forged-steel crankshaft has lightened counterweights to reduce overall mass for high engine operation. The engine has lightweight cast-aluminum pistons, a structural aluminum oil pan and the innovative MultiAir cylinder head that allows for intake air control.



The result? 15 percent more torque, up to 7.5 percent more fuel efficiency and a 7.5 percent reduction in emissions over a naturally aspirated engine. The engine's turbocharger spins up to 230,000 rpm to convert exhaust heat and pressure, driving more air to the cylinders for more torque and power. Other powertrain features include an air box with efficient airflow and a low-restriction exhaust system. The standard 6-speed automatic transmission features AutoStick, which shifts automatically but performs with the sportiness of a manual transmission. This MultiAir/transmission configuration is sure to deliver top-notch performance and the confidence of control.



To further enhance overall performance, the 500L has KONI® MacPherson front struts and rear shock absorbers with FSD Technology. They not only help soften the ride over rough roadways, they also help make the vehicle's handling more responsive. You'll enjoy an easy, smooth and effortless drive with excellent control. The long and short of it? This thing really moves.

## TURBOCHARGED

LIFE IN THE FAST LANE



**FUN TO DRIVE** It takes a certain expertise to make things look easy, and the 500L does it on a daily basis. Its small-wide architecture, rigidity and precise electronic power steering (EPS) combine with engine and transmission performances that make you say “bravo”!



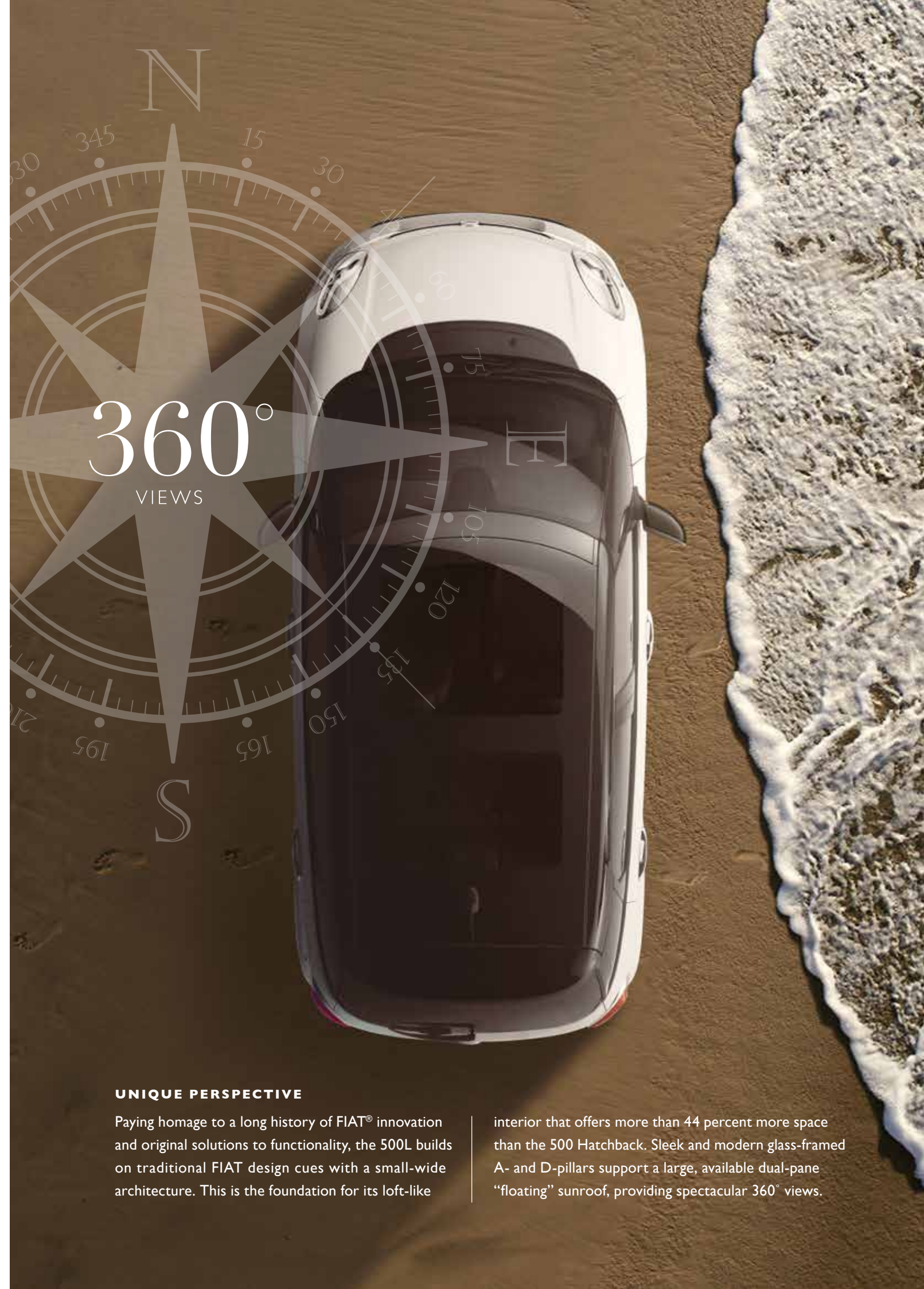
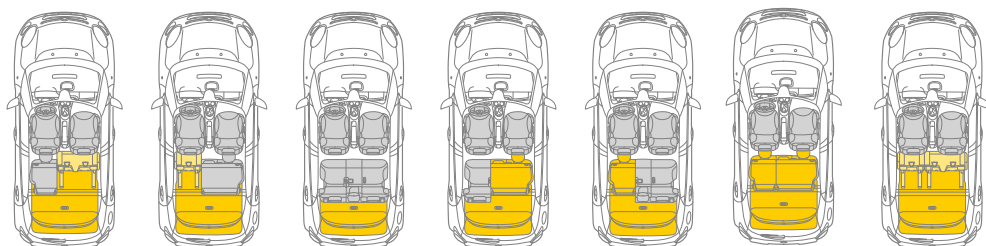
# Uconnect®

## THE FOCAL POINT

Uconnect® for FIAT® 500L informs and entertains while you keep your hands on the wheel and eyes on the road. The Uconnect 5.0 system with 5-inch touchscreen display acts as a hub to technology that is, ironically enough, very hands-off. Radio controls and compatible smartphones can be accessed via Integrated Voice Command<sup>1</sup> with Bluetooth®. The available Uconnect 6.5 offers a 6.5-inch touchscreen display. With it, the available SiriusXM® Satellite Radio<sup>2</sup> is accessible via Integrated Voice Command<sup>1</sup> with Bluetooth — along with AM/FM radio and the standard factory-activated Navigation. Count on hands-free<sup>1</sup> calling with your Bluetooth-enabled phone, Streaming Audio and text message<sup>11</sup> delivery.



Super-flexible seating configurations with the Tilt, Tumble & Slide rear seats quickly and easily change to accommodate your own unique mix of cargo and passenger — every trip. And the available BeatsAudio™ Premium Sound System delivers your favorite tunes for your latest adventure.

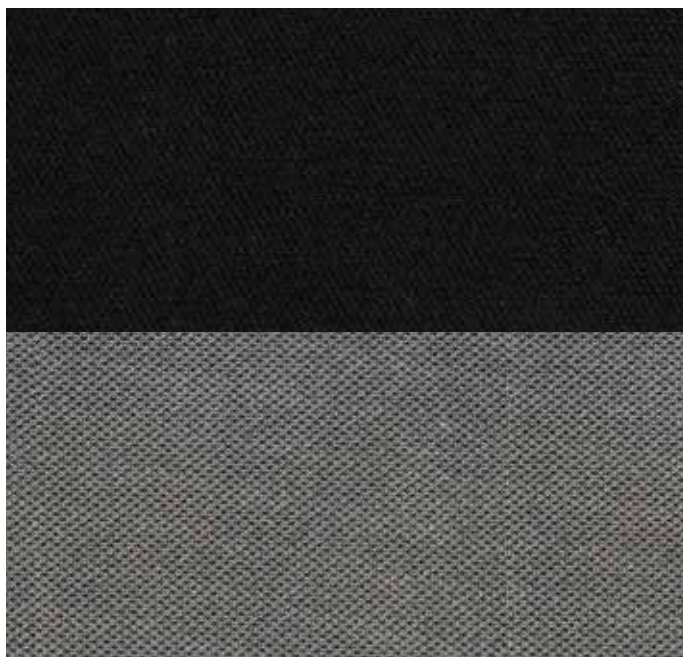


## UNIQUE PERSPECTIVE

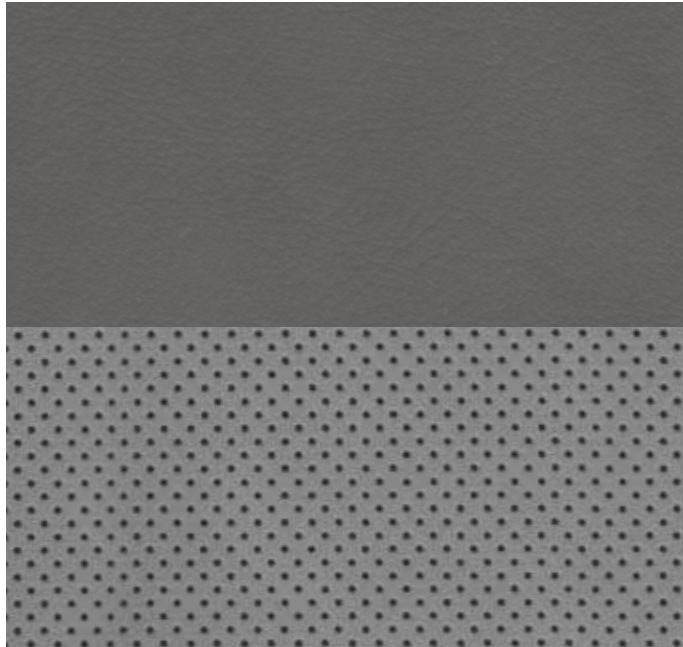
Paying homage to a long history of FIAT® innovation and original solutions to functionality, the 500L builds on traditional FIAT design cues with a small-wide architecture. This is the foundation for its loft-like

interior that offers more than 44 percent more space than the 500 Hatchback. Sleek and modern glass-framed A- and D-pillars support a large, available dual-pane “floating” sunroof, providing spectacular 360° views.

Room with *a spectacular view*



Nero/Grigio Cloth  
Standard on Pop



Grigio Scuro/Grigio Chiaro Perforated Leather Trim  
Standard on Lounge and Trekking



Beige/Nero Perforated Leather Trim  
Standard on Lounge and Trekking



500L Interior Colors



## FIAT® 500L Exterior Colors with Roof Options

01\_ NERO, Black  
White\* and Body Color Roof



02\_ GRIGIO CHIARO‡ Graphite Metallic  
Body Color and Black‡ Roof



03\_ GRIGIO SCURO, Grey Metallic  
White\*, Body Color, Red§ and Black‡ Roof



04\_ GIALLO‡ Yellow  
White\*, Body Color and Black‡ Roof



05\_ ROSSO PERLA, Deep Lava Red Pearl  
White\*, Body Color and Black‡ Roof



06\_ BLU TORNADO†  
White\*, Body Color and Black‡ Roof



07\_ ROSSO† Red  
White\*, Body Color and Black‡ Roof



08\_ VERDE BOSCO PERLA, Forest Green Pearl  
White\*, Body Color and Black‡ Roof



09\_ MOCHA LATTE  
White\*, Body Color and Black‡ Roof



10\_ BIANCO, White  
Body Color, Red§ and Black† Roof



Beyond its nearly unobstructed 360° view, FIAT® 500L offers a clear sense of stability with advanced standard and available safety and security features.

### NICE BLOCK

A comprehensive 7-air bag<sup>7</sup> system, reactive front head restraints<sup>8</sup>, front-passenger seat BeltAlert (LAX) and Constant-Force Retractors all create a much-needed barrier just at the right moment.

### 6TH SENSE

The available ParkSense® Rear Park Assist System<sup>2</sup>, the Intelligent Battery Sensor and the available ParkView® Rear Back-Up Camera<sup>3</sup> heighten awareness.

### IN COMMAND

Electronic Stability Control (ESC)<sup>5</sup>, Electronic Roll Mitigation, Hill Start Assist and Anti-lock Brake System aid and assist when you need it most.

### DETERRENTS

Look to the Vehicle Theft Security Alarm, the Sentry Key® Engine Immobilizer and the Remote Keyless/Illuminated Entry System to help keep you and your 500L safe and sound.



FIAT 500L Safety and Security

\*White roof packaged with Premium Package on Trekking and Lounge models.

†Not all colors are available on all trim levels — please consult with a representative at your local FIAT Dealer for complete details.

‡Black roof packaged with Urbana Appearance Package or Premium Package on Trekking with Lounge models.

§Red roof packaged with Urbana Appearance Package on Trekking models.

## FIAT® 500L Specifications

	POP	TREKKING	LOUNGE
<b>ENGINE</b>			
1.4L MultiAir® Turbo I-4	•	•	•
<b>TRANSMISSION</b>			
6-speed automatic with AutoStick	•	•	•
<b>MECHANICAL FEATURES</b>			
Alternator — 150-amp	•	•	•
Battery — 500-amp, maintenance-free	•	•	•
Engine Block Heater	○	○	○
Exhaust System — Single rear with bright tip	•	•	•
Steering — Electric power, tilt/telescoping column	•	•	•
Suspension — Normal-duty; front MacPherson suspension with coil springs and twin-tube struts with KONI® FSD technology and stabilizer bar; rear twist-beam axle with coil springs and twin-tube shock absorbers with KONI FSD technology	•	•	•
<b>EXTERIOR FEATURES</b>			
Bodyside — Body-color door moldings	•		
Black door moldings with Chrome insert		•	
Body-color door moldings with Chrome insert			•
Lower sill and wheel arch accent moldings in Black		•	
Door Handles — Chrome	•	•	•
Fascias (front) — Body-color	•		•
Rugged design with Satin Silver accent		•	
Body-color grille with Chrome accent and logo	•	•	•
Fascias (rear) — Body-color	•		•
Rugged design with Satin Silver accent		•	
Chrome taillamp bezels	•	•	•
Fuel Tank — 13.2-gallon (50-liter) capacity	•	•	•
Glass — Deep-tint, sunscreen	•	•	•
Lighting — Bifunctional halogen projector headlamps	•	•	•
Daytime running lamps (DRLs)	•	•	•
Fog lamps		•	•
License Plate Brow — Body-color	•		•
Body-color with Black license plate area		•	
Front plate bracket	○	○	○
Mirrors — Power adjustable, foldaway with spotter mirrors in roof color	•	•	
Power adjustable, foldaway with spotter mirrors in Chrome			•
Roof — Nero (Black) includes roof-color exterior mirrors; mirrors remain Chrome on Lounge models (packaged with Premium Package and Urbana Appearance Package on Trekking models; packaged with Premium Package on Lounge models)		P	P
Bianco (White) includes roof-color exterior mirrors; mirrors remain Chrome on Lounge models (packaged with Premium Package on Trekking and Lounge models)		P	P
Rosso (Red) includes roof-color exterior mirrors; requires Bianco (White) and Grigio Scuro (Graphite Metallic) exterior colors (packaged with Urbana Appearance Package)		P	
Sunroof — Dual-pane glass with power vent and 1-touch express open; includes sun visors with illuminated vanity mirrors (packaged with Dual-Pane Sunroof Package and Premium Package on Trekking and Lounge models)		P	P
Tires — 205/55R16 BSW All-Season Touring	•		
225/45R17 BSW All-Season Performance (included with 17-inch wheels)		•	•
Tire Service Kit	•	•	•
Compact spare (packaged with Premium Package)	P	P	○
Wheels — 16-inch, 13-spoke Gray Gloss painted aluminum	•		
17-inch, 7-slotted-spoke machined aluminum with Grey painted pockets		•	
17-inch, 5-oval-spoke Ecoreflex Gloss painted aluminum			•
17-inch, 7-slotted-spoke Matte Black painted machined aluminum (packaged with Urbana Appearance Package)		P	
Windows — Front wipers, variable/intermittent	•	•	•
Power front and rear with 1-touch up/down	•	•	•
Rear window defroster	•	•	•
Rear wiper, intermittent	•	•	•

## FIAT® 500L Specifications (continued)

	POP	TREKKING	LOUNGE
<b>INTERIOR FEATURES</b>			
Armrest — Vinyl-wrapped with storage, coordinated with seat color	•	•	•
Fold-down rear armrest with cup holder (included with leather-trimmed seats)		•	•
Assist Handles — Front and rear with coat hooks	•	•	•
Cargo area — Multi-position rear cargo shelf panel	•	•	•
Rear cargo area lamp	•	•	•
Climate Control — Air conditioning	•	•	
Automatic Temperature Control (ATC) with Dual-Zone controls (packaged with Popular Equipment and Premium Packages on Pop and Trekking models)	P	P	•
Console — Front center floor	•	•	•
Front overhead with reading/map lamps	•	•	•
Electronic Vehicle Information Center (EVIC) — Driver-selectable with trip computer, outside temperature, average fuel economy, distance-to-empty, low fuel, service interval and driving range	•	•	•
Mirrors — Rear-passenger observation (not available with sunroof)	•	•	•
Sun visors with illuminated vanity (packaged with Dual-Pane Sunroof and Premium Packages)		P	P
Rearview manual day/night adjust	•	•	
Rearview auto-dimming (packaged with Popular Equipment and Premium Packages on Pop and Trekking models)	P	P	•
Instrument Panel — Silver-textured bezel	•		
Premium-wrapped bezel (included with leather seating)		•	•
Power Outlet — 12-volt	•	•	•
115-volt auxiliary			•
Seating — Premium cloth low-back bucket	•		
Premium leather-trimmed bucket		•	•
Seats (front) — Driver and front-passenger height adjuster	•	•	•
4-way power driver lumbar adjuster (packaged with Popular Equipment and Premium Packages)	P		
4-way power driver and front-passenger lumbar adjuster (packaged with Premium Packages)		P	•
Heated		•	•
Front-seatback map pockets	•	•	•
Seats (rear) — 60/40 split-folding with Tilt, Tumble & Slide function	•	•	•
3 headrests	•	•	•
Shift Knob — Black, leather-wrapped with Chrome accent	•	•	•
Speedometer — 160-mph primary	•	•	•
Steering Wheel — Leather-wrapped with audio and cruise controls	•	•	•
Storage — Front-passenger instrument panel cubby bin and concealed compartment	•	•	•
Front-passenger glove box with dampened door	•	•	•
<b>UCONNECT®/MULTIMEDIA</b>			
Media Hub — Includes USB and AUX ports	•	•	•
Speakers — 6	•		
BeatsAudio™ Premium Sound System — Includes 6 premium speakers, 8-inch dual-voice coil (DVC) subwoofer with trunk-mounted enclosure, 8-channel amplifier with BeatsAudio digital sound processing (DSP) algorithm (packaged with Premium Package)	O/P	•	•
Uconnect 5.0 — Includes 5-inch touchscreen display, Integrated Voice Command <sup>1</sup> with Bluetooth® for hands-free phone <sup>1</sup> , Bluetooth Streaming Audio, text message reader, <sup>1</sup> personalization settings, AM/FM radio, single-CD/MP3 player	•		
Uconnect 6.5 — Includes 6.5-inch touchscreen display, GPS navigation, Integrated Voice Command <sup>1</sup> with Bluetooth for hands-free calling <sup>1</sup> , Bluetooth Streaming Audio, text message reader, <sup>1</sup> AM/FM radio, single-CD/MP3 player and personalization settings (packaged with Premium Package)	P	•	•
SiriusXM® Satellite Radio <sup>2</sup> — Includes 1-year trial subscription (packaged with Popular Equipment and Premium Packages)	P	•	•

## FIAT® 500L Specifications (continued)

	POP	TREKKING	LOUNGE
<b>SAFETY AND SECURITY</b>			
Air Bags <sup>7</sup> — Advanced multistage driver and front-passenger	•	•	•
Supplemental front and rear side-curtain	•	•	•
Supplemental front seat-mounted side (pelvic-thorax)	•	•	•
Driver's-side knee-bolster	•	•	•
BeltAlert — Passenger seat	•	•	•
Brake System — Antilock 4-wheel disc with Vehicle Dynamics Controls/Systems	•	•	•
Constant-Force Retractors	•	•	•
Electronic Stability Control (ESC) <sup>5</sup>	•	•	•
Electronic Roll Mitigation	•	•	•
Hill Start Assist	•	•	•
Intelligent Battery Sensor (IBS)	•	•	•
Child Seat Anchor System — LATCH-ready	•	•	•
ParkSense® Rear Park Assist System <sup>3</sup> (packaged with Premium Packages)	P	P	•
ParkView® Rear Back-Up Camera <sup>3</sup> (packaged with Premium Packages)	P	P	•
Reactive Head Restraints <sup>9</sup> — Front seats	•	•	•
Remote Keyless/Illuminated Entry System	•	•	•
Sentry Key® Engine Immobilizer — Theft-deterrent system	•	•	•
Tire Pressure Monitoring System with display	•	•	•
Vehicle Theft Security Alarm	•	•	•
<b>GROUPS AND PACKAGES</b>			
Dual-Pane Sunroof Package — Includes dual-pane power sunroof and sun visors with illuminated vanity mirrors (not available with Premium Packages)		○	○
Popular Equipment Package — Includes power driver 4-way lumbar adjuster, Automatic Temperature Control (ATC), rearview auto-dimming mirror, SiriusXM® Satellite Radio, <sup>2</sup> ParkSense Rear Park Assist System <sup>3</sup> and ParkView Rear Back-Up Camera <sup>3</sup> (not available with Premium Package)	○		
Popular Equipment Package — Includes power driver and passenger 4-way lumbar adjuster, Dual-Zone ATC, rearview auto-dimming mirror, ParkSense Rear Park Assist System <sup>3</sup> and ParkView Rear Back-Up Camera <sup>3</sup> (not available with Premium Package on Trekking)		○	
Premium Package — Includes Uconnect® 6.5 with GPS Navigation capability, BeatsAudio™ Premium Sound System, SiriusXM Satellite Radio <sup>2</sup> with 1-year trial subscription, power driver 4-way lumbar adjuster, ATC, rearview auto-dimming mirror, ParkSense Rear Park Assist System, <sup>3</sup> ParkView Rear Back-Up Camera <sup>3</sup> and compact spare tire	○		
Premium Package — Includes power driver and front passenger 4-way lumbar adjuster, ATC, rearview auto-dimming mirror, ParkSense Rear Park Assist System, <sup>3</sup> ParkView Rear Back-Up Camera, <sup>3</sup> dual-pane power sunroof, sun visors with illuminated vanity mirrors, compact spare tire and accent roof in Black or White including exterior side mirrors		○	
Premium Package — Dual-pane power sunroof, sun visors with illuminated vanity mirrors and accent roof in Black or White			○
Urbana Appearance Package — Includes Satin door handles, Matte Black bodyside moldings with Satin insert, accent-color roof in Black or Red, 17-inch Matte Black aluminum wheels and Grigio Scuro/Grigio Chiaro perforated leather-trim seating (not available with Premium Package)		○	

• = Standard. ○ = Optional. P = Available within Package noted.



16-INCH 13-SPOKE GRAY GLOSS PAINTED ALUMINUM  
Standard on Pop



17-INCH 7-SLOTTED-SPOKE MACHINED ALUMINUM WITH GREY PAINTED POCKETS  
Standard on Trekking

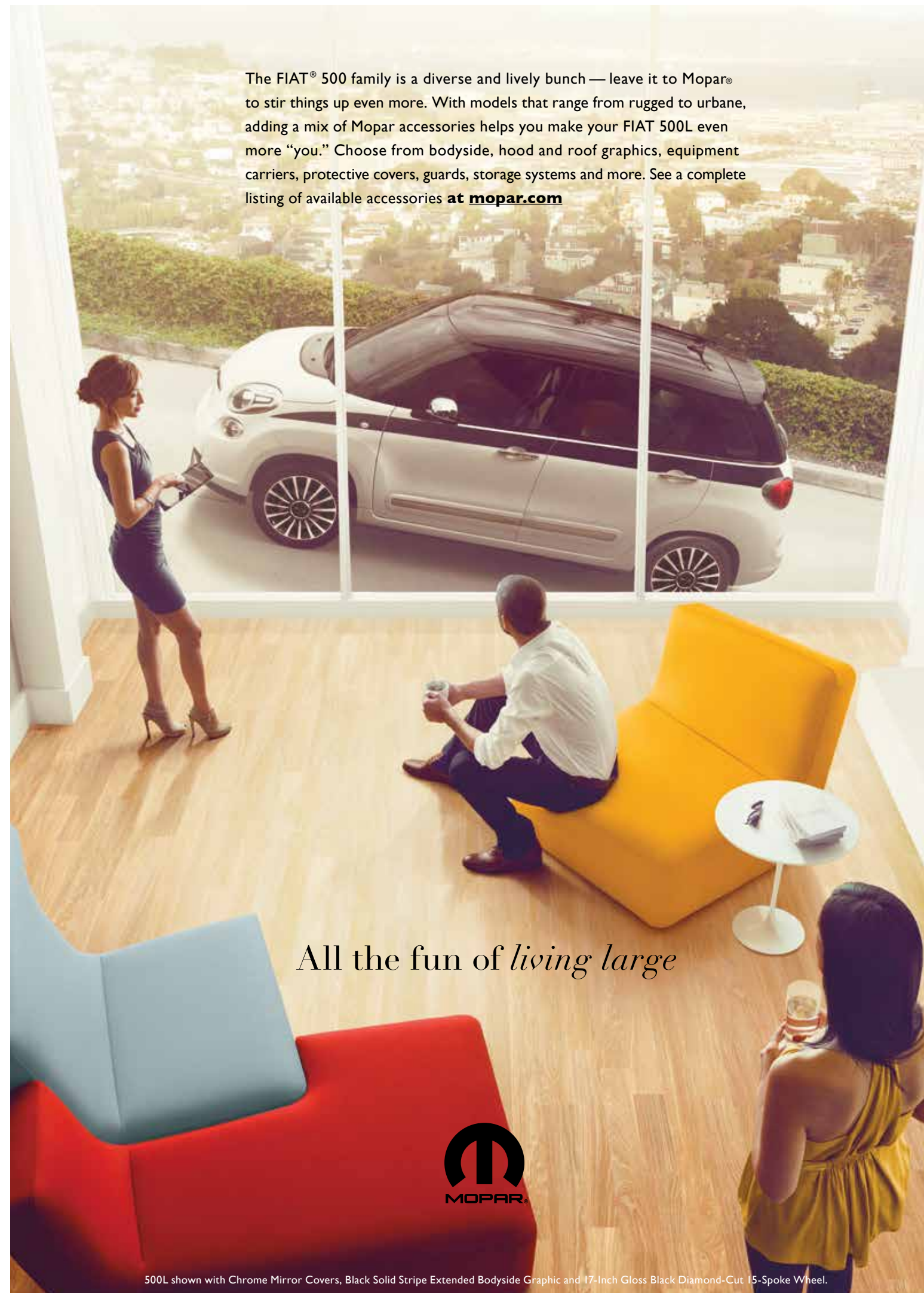


17-INCH 5-OVAL-SPOKE ECOREFLEX GLOSS PAINTED ALUMINUM  
Standard on Lounge



17-INCH 7-SLOTTED-SPOKE MATTE BLACK PAINTED MACHINED ALUMINUM  
Available on Trekking with Urbana Appearance Package

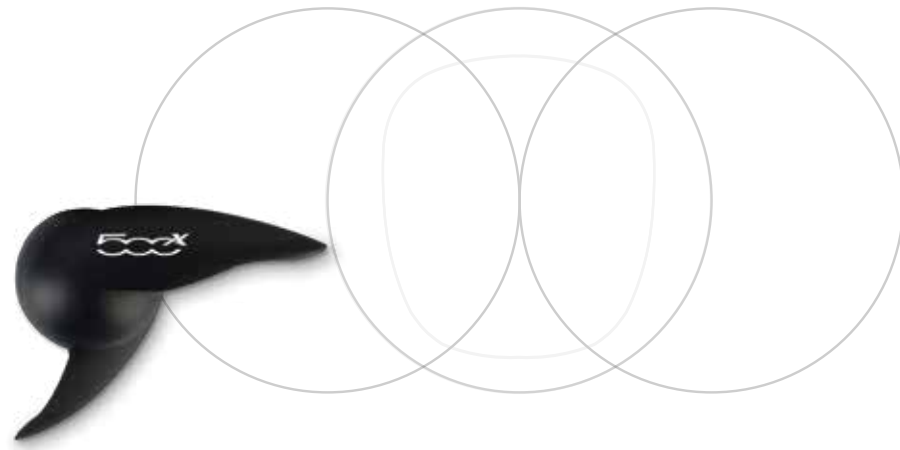
The FIAT® 500 family is a diverse and lively bunch — leave it to Mopar® to stir things up even more. With models that range from rugged to urbane, adding a mix of Mopar accessories helps you make your FIAT 500L even more “you.” Choose from bodyside, hood and roof graphics, equipment carriers, protective covers, guards, storage systems and more. See a complete listing of available accessories at [mopar.com](http://mopar.com)



All the fun of *living large*



500L shown with Chrome Mirror Covers, Black Solid Stripe Extended Bodyside Graphic and 17-Inch Gloss Black Diamond-Cut 15-Spoke Wheel.



### STRIKING STYLE.

Display your affection for striking style and attitude with colorful merchandise that complements an active lifestyle. This youthful collection includes everything from trendsetting apparel to distinctive conversation pieces for home, office and travel.



Take an engaging multimedia tour on your mobile device. Log on to the [fiatusa.com](http://fiatusa.com) mobile site for a comprehensive, at-a-glance review of what you need to know about your FIAT® vehicle. You'll experience visual and interactive demonstrations of the entire lineup and enjoy access to product information at your fingertips, wherever you go.

e - s t o r e . f i a t u s a . c o m

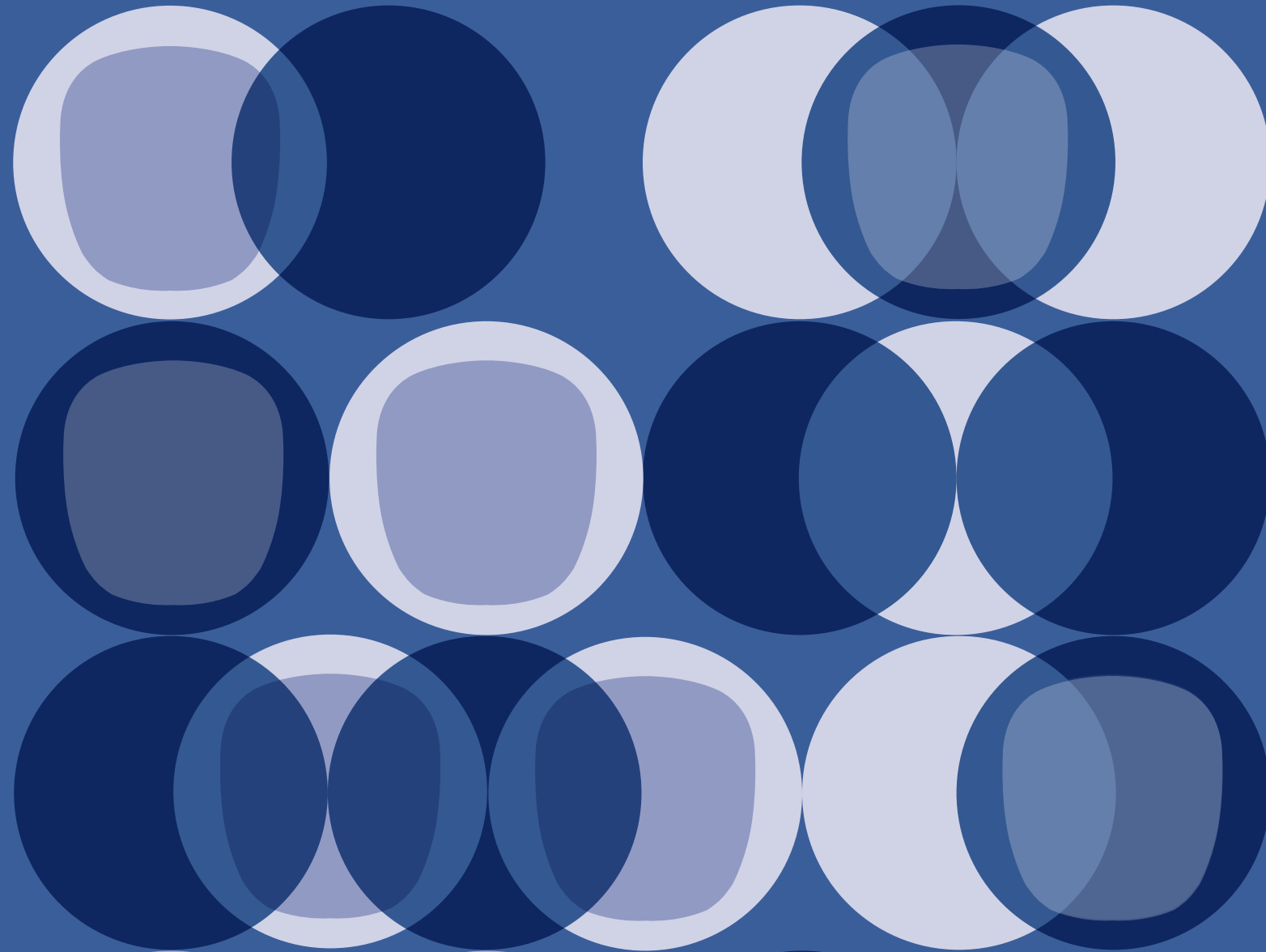
Standard coverage includes: Basic Limited Warranty — 4 Years/50,000 Miles, Anti-Corrosion Perforation Limited Warranty (outer panel) — 5 Years/100,000 Miles, Roadside Assistance (services include the following) — 4 Years/Unlimited Miles: Flat-Tire Service, Out of Gas/Fuel Delivery (maximum two gallons), Battery Jump Assistance, Lockout Service and Towing Assistance. Visit your FIAT Dealer for additional details, eligibility and restrictions.



Join fellow enthusiasts and tell your story by posting comments, participating in discussions and sharing your FIAT vehicle photos and videos. Connect with our community on Facebook ([facebook.com/fiatusa](http://facebook.com/fiatusa)), follow us on Twitter ([twitter.com/fiatusa](http://twitter.com/fiatusa)), and check us out on YouTube ([youtube.com/fiatusa](http://youtube.com/fiatusa)), Tumblr ([fiatusa.tumblr.com](http://fiatusa.tumblr.com)), Google+ ([plus.google.com/+fiatusa](http://plus.google.com/+fiatusa)), FIAT Backstage ([blog.fiat.com](http://blog.fiat.com)), Instagram ([instagram.com/fiatusa](http://instagram.com/fiatusa)), Pinterest ([pinterest.com/fiatusa](http://pinterest.com/fiatusa)) and Vine ([vine.co/fiatusa](http://vine.co/fiatusa)). Thank you for following.



**4-YEAR/50,000-MILE LIMITED WARRANTY**



(1) Requires a mobile phone equipped with the Bluetooth Hands-Free Profile. Visit [UconnectPhone.com](http://UconnectPhone.com) for system and device compatibility. (2) SiriusXM subscriptions for audio and data services are sold by SiriusXM to follow your trial subscription. If you decide to continue listening after your trial, the subscription plan you choose will automatically renew thereafter and you will be charged according to your chosen payment method at then-current rates. Fees and taxes apply. To cancel, you must call SiriusXM at 1-866-635-2349. See the SiriusXM Customer Agreement for complete terms and more information at [www.siriusxm.com](http://www.siriusxm.com). All fees and programming subject to change. Your equipment and features for SiriusXM services will vary depending upon the vehicle you select and may be limited in select markets. (3) Always look before proceeding, electronic drive aid is not a substitute for conscientious driving. Always be aware of your surroundings. (4) Always check visually for vehicles prior to changing lanes. (5) No system, no matter how sophisticated, can repeal the laws of physics or overcome careless driving actions. Performance is limited by available traction, which snow, ice and other conditions can affect. When the ESC warning lamp flashes, the driver needs to use less throttle and adapt speed and driving behavior to prevailing road conditions. Always drive carefully, consistent with conditions. Always wear your seat belt. (6) Siri Eyes Free requires an iPhone equipped with Siri. Certain features not available while the vehicle is in motion. iPhone must be within active cellular range. Customer's existing iPhone data rates apply to Internet-supported features. (7) The Advanced Front Air Bags in this vehicle are certified to the new U.S. Federal regulations for Advanced Air Bags. Children 12 years old and younger should always ride buckled up in a rear seat. Infants in rear-facing child restraints should never ride in the front seat of a vehicle with a passenger front air bag. All occupants should always wear their lap and shoulder belts properly. (8) Always sit properly with the head restraint properly adjusted. Never place anything in front of the head restraint. (9) FCW system is solely an alert system for the front of the vehicle which does not take any actions to change vehicle dynamics to avoid a collision, not a substitute for active driver involvement. The driver must remain aware of traffic conditions and be prepared to use brakes to avoid collisions. (10) LDW is a driver convenience system, not a substitute for active driver involvement. The driver must remain aware of traffic conditions and be prepared to use brakes to avoid collisions. (11) Voice Text Reply and Voice Texting features require a compatible mobile device enabled with Bluetooth Message Access Profile (MAP). iPhone and some other smartphones do not currently support Bluetooth MAP. Visit [www.UconnectPhone.com](http://www.UconnectPhone.com) for system and device compatibility. Ensure MAP is ON and incoming message notification is enabled. Vehicle must be registered for Uconnect Access and you must fulfill minimum subscription requirements. Also requires the use of a compatible smartphone that supports text messaging and Bluetooth. Check [UconnectPhone.com](http://UconnectPhone.com) for device compatibility.

©2016 FCA US LLC. All Rights Reserved. FIAT, FIAT 500, FIAT 500 Pop and FIAT 500 Lounge are registered trademarks of FCA Group Marketing S.p.A., used under license by FCA US LLC. Mopar, LaneSense, ParkSense, ParkView, Sentry Key, Tigershark and Uconnect are registered trademarks and Keyless Enter 'n Go, is a trademark of FCA US LLC. The 500L design and the 500X design are registered trademarks of FCA Italy S.p.A., used under license by FCA US LLC.

MultiAir is a registered trademark of C.R.F. Società Consortile per Azioni, used under license by FCA US LLC. Android, Google+ and YouTube are registered trademarks of Google Inc. Dr. Dre, Beats, BeatsAudio and the b logo are trademarks of Beats Electronics, LLC. Bluetooth is a registered trademark of Bluetooth SIG, Inc. Facebook is a registered trademark of Facebook Inc. Instagram is a registered trademark of Instagram, Inc. iOS, iPad, iPhone, iPod, iTunes and Siri are registered trademarks of Apple Inc. KONI is a registered trademark of KONI North America. Pinterest is a registered trademark of Pinterest, Inc. SIRIUS, XM and all related marks and logos are trademarks of SIRIUS XM Radio Inc. and its subsidiaries. Tumblr is a registered trademark of Tumblr, Inc. The Twitter name, logo, Twitter T, Tweet, Twitter bird and Vine are trademarks of Twitter, Inc. in the United States and other countries.

This brochure is a publication of FCA US LLC. All product illustrations and specifications are based upon current information at the time of publication approval. FCA US LLC reserves the right to make changes from time to time, without notice or obligation, in prices, specifications, colors and materials, and to change or discontinue models which are considered necessary to the purpose of product improvement or for reasons of design and/or marketing.